

# CAMELBAK®

## 2021 CUSTOM CATALOG

---





### BENEFITS

1. UNLIMITED COLOR AND FULL WRAP ARTWORK
2. NO ARTWORK SET UP FEES
3. LOW MINIMUM ORDER QUANTITIES
4. FAST PRODUCTION TURNAROUND
5. THE MORE YOU BUY, THE MORE YOU SAVE
6. GROUP PERSONALIZATION

# CUSTOM

MAKE YOUR RETAIL ASSORTMENT OR SPECIAL EVENT UNIQUELY YOURS BY CREATING A CUSTOM BOTTLE.

CamelBak has been reinventing hydration for 30 years, and we take pride in every piece in our wide-ranging custom assortment. Whether you're looking for a premium bike bottle for your event or the perfect travel mug for retail, we have the right products to bring your vision to life.

- **Digital Print** offers high quality unlimited color graphics and images that allow your design to stand out from the crowd.
- **Laser Etch** leaves a premium impression with sharp, clean lines on stainless steel.
- **Group Personalization** allows you to easily build a set of custom bottles with personalized text for each bottle via our online custom tool at no extra cost.

Minimum order quantities start as low as 24 units for stainless steel and 36 units for plastic. Want quantities lower than our minimum order quantity? No problem! Create a retailer account through [custom@camelbak.com](mailto:custom@camelbak.com) and place an order on our online customizer at [camelbak.com/custom](https://camelbak.com/custom).







VACUUM INSULATED STAINLESS STEEL

# HORIZON

COLLECTION

**EVERY INHALE DESERVES AN EXHALE.**

CamelBak® has been hydrating and sustaining outdoor enthusiasts for over 30 years. No matter what passions you live for, we all need time to catch our breath after a long day. Whether you want to celebrate a big win, toast a personal best, or just hang with friends, take the time to gather, relax, and unwind.

**SPILL RESISTANT TRI-MODE SLIDER FOR ADJUSTABLE FLOW**

Eliminates splashes when closed



**NON-SLIP SILICONE BASE**

Soft landing on all surfaces



**FULL POWDER COAT FINISH**

Taste your drink, not your cup. Dishwasher safe



**WINE TASTES BETTER**

Bowl shape interior for full aroma and flavor



# TUMBLER 30 OZ : .9L

NEW



2390001085 BLACK 2390401085 LARKSPUR 2390601085 TERRACOTTA ROSE 2390301085 MOSS 2390101085 WHITE

16 HRS 8 HRS

# CAMP MUG 12 OZ : .35L

NEW



2393001035 BLACK 2393401035 LARKSPUR 2393301035 MOSS 2393101035 WHITE

6 HRS 4 HRS

# TUMBLER 20 OZ : .6L

NEW



2389001060 BLACK 2389401060 LARKSPUR 2389601060 TERRACOTTA ROSE 2389301060 MOSS 2389101060 WHITE

14 HRS 7 HRS

# ROCKS TUMBLER 10 OZ : .3L

NEW



2391001030 BLACK 2391401030 LARKSPUR 2391301030 MOSS 2391101030 WHITE

5 HRS 3 HRS

# TUMBLER 16 OZ : .5L

NEW



2388001050 BLACK 2388401050 LARKSPUR 2388601050 TERRACOTTA ROSE 2388301050 MOSS 2388101050 WHITE

10 HRS 5 HRS

# WINE BOTTLE 25 OZ : .75L

NEW



2398001075 BLACK 2398601075 TERRACOTTA ROSE 2398101075 WHITE

35 HRS 25 HRS

# TUMBLER 12 OZ : .35L

NEW



2387001035 BLACK 2387401035 LARKSPUR 2387601035 TERRACOTTA ROSE 2387301035 MOSS 2387101035 WHITE

6 HRS 4 HRS

# WINE TUMBLER 12 OZ : .35L

NEW



2392001035 BLACK 2392601035 TERRACOTTA ROSE 2392101035 WHITE

6 HRS 4 HRS

VACUUM INSULATED STAINLESS STEEL  
**MULTIBEV™**  
 NEW



<b>COLLECTION</b>	EVERYDAY DRINKWARE
<b>MATERIAL</b>	VACUUM INSULATED STAINLESS STEEL
<b>COMPATIBLE CAPS</b>	EDDY®+ : CHUTE® MAG : CARRY CAP : HOT CAP

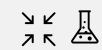
**A WATER BOTTLE AND TRAVEL CUP, ALL-IN-ONE**

MultiBev™ is the 2-in-1 vessel that's convenient and versatile for everyday use. Double wall vacuum stainless steel keeps your beverage the perfect temperature for hours – ready to pour and drink on-the-go or share with a friend. The leak-proof Pak™ Cap conveniently stores the silicone Roll and Fold Lid, snacks, or any other small essentials. Feel good about choosing a sustainable solution to disposable waste.

**FEATURES**

- 1. ROLL & FOLD SILICONE LID**  
FOOD GRADE SILICONE, SPLASH RESISTANT
- 2. PAK™ CAP**  
STORES ROLL & FOLD SILICONE LID, LEAKPROOF
- 3. VACUUM INSULATED BOTTLE AND CUP**  
18/8 STAINLESS STEEL
- 4. DURABLE**  
POWDER COAT FINISH
- 5. STAYS DRY**  
SWEAT-PROOF INSULATION
- 6. EASY TO CARRY**  
COMFORTABLE CARRY HANDLE
- 7. EASY TO CLEAN**  
CAP, LID AND VESSELS DISHWASHER SAFE
- 8. DRINK CLEAN**  
BPA, BPS & BPF FREE
- 9. UNIVERSAL CAP SYSTEM**  
COMPATIBLE WITH MOST ACCESSORY CAPS
- 10. TEA INFUSER**  
ACCESSORY COMPATIBLE  
SOLD SEPARATELY.  
2505101000

**SUSTAINABILITY**



**22 OZ / 16 OZ : .65L / .5L**



2424001065 BLACK : BLACK  
 2424101065 WHITE : WHITE  
 2424301065 MOSS : MINT  
 2424601065 TERRACOTTA ROSE : CAMELLIA PINK



**17 OZ / 12 OZ : .5L / .35L**



2412001051 BLACK : BLACK  
 2412101051 WHITE : WHITE  
 2412301051 MOSS : MINT  
 2412601051 TERRACOTTA ROSE : CAMELLIA PINK



VACUUM INSULATED STAINLESS STEEL

# FORGE® FLOW

NEW



<b>COLLECTION</b>	EVERYDAY DRINKWARE
<b>MATERIAL</b>	VACUUM INSULATED STAINLESS STEEL
<b>COMPATIBLE CAPS</b>	N/A

## PRESS, SIP, AND GO

Our rugged and sound travel mug has been redesigned with easy-sip features that make this vessel a must-have co-pilot for beverages on-the-go. Equipped with one hand drink lever operation and a convenient free-flow lock open for frequent sips. Finished with a non-slip silicone base and a full powder coat finish for added durability.

### FEATURES

- 1. LEAK-PROOF**  
LEAK-PROOF WHEN CLOSED
- 2. FREE FLOW LOCK**  
LOCKS OPEN FOR EASY COOLING AND FREQUENT SIPPING
- 3. SELF SEALING**  
ONE-HANDED DRINK LEVER
- 4. NON-SLIP SILICONE BASE**
- 5. VACUUM INSULATED**  
18/8 STAINLESS STEEL
- 6. DURABLE**  
POWDER COAT FINISH
- 7. DISHWASHER SAFE**  
ARM FLIPS UP FOR EASY CLEANING, CAP AND VESSEL DISHWASHER SAFE
- 8. DRINK CLEAN**  
BPA, BPS & BPF FREE



TEA INFUSER  
ACCESSORY COMPATIBLE  
SOLD SEPARATELY.  
2505101000

### SUSTAINABILITY



REPURPOSE™  
SILVER

20 OZ : .6L

8 HRS  
13 HRS



2475001060 BLACK  
2475401060 NAVY  
2475301060 MOSS  
2475801060 KOI  
2475101060 WHITE

16 OZ : .5L

6 HRS  
11 HRS



2476001050 BLACK  
2476401050 NAVY  
2476301050 MOSS  
2476801050 KOI  
2476101050 WHITE

12 OZ : .35L

5 HRS  
10 HRS



2477001035 BLACK  
2477401035 NAVY  
2477301035 MOSS  
2477801035 KOI  
2477101035 WHITE



VACUUM INSULATED STAINLESS STEEL

# HOT CAP



TOP VIEW



20 OZ : .6L 10 HRS 24 HRS



1834002060 BLACK 1834403060 NAVY 1834301060 MOSS 1834102060 WHITE

12 OZ : .35L 6 HRS 10 HRS



1893002040 BLACK 1893403040 NAVY 1893301040 MOSS 1893102040 WHITE

<b>COLLECTION</b>	EVERYDAY DRINKWARE
<b>MATERIAL</b>	VACUUM INSULATED STAINLESS STEEL
<b>COMPATIBLE CAPS</b>	EDDY®+ : CHUTE® MAG : CARRY CAP : PAK™ CAP

## KEEP IT TOASTY

Do right by your dry roast with the vacuum insulated Hot Cap travel mug. Twist to open and sip from any side of the 360° drink through cap. Fully leak-proof when closed.

### FEATURES

- 360° CAP**  
DRINK FROM ANY SIDE
- LEAK-PROOF**  
LEAK-PROOF WHEN CLOSED
- VACUUM INSULATED**  
18/8 STAINLESS STEEL
- DURABLE**  
POWDER COAT FINISH
- EASY TO CLEAN**  
CAP AND VESSEL DISHWASHER SAFE
- DRINK CLEAN**  
BPA, BPS & BPF FREE
- UNIVERSAL CAP SYSTEM**  
COMPATIBLE WITH MOST ACCESSORY CAPS

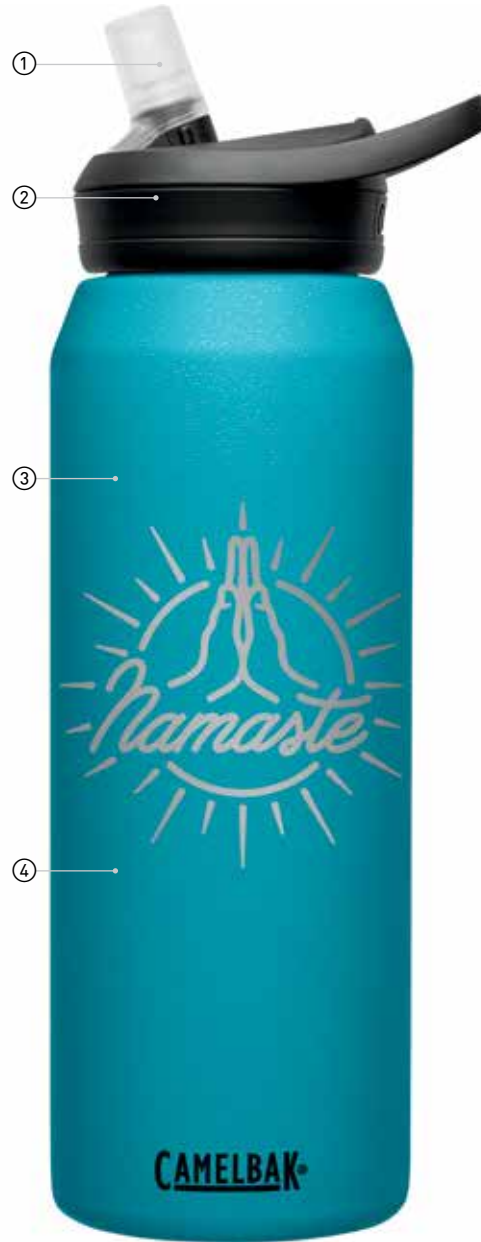
### SUSTAINABILITY



REPURPOSE™  
SILVER

VACUUM INSULATED STAINLESS STEEL

# EDDY®+



20 OZ : .6L 24 HRS



1649001060 BLACK 1649401060 NAVY 1649403060 LARKSPUR 1649601060 TERRACOTTA ROSE 1649101060 WHITE

32 OZ : 1L 32 HRS



1650001001 BLACK 1650401001 NAVY 1650403001 LARKSPUR 1650601001 TERRACOTTA ROSE 1650101001 WHITE

<b>COLLECTION</b>	EVERYDAY BOTTLE
<b>MATERIAL</b>	VACUUM INSULATED STAINLESS STEEL
<b>COMPATIBLE CAPS</b>	CHUTE® MAG : PAK™ CAP : CARRY CAP : HOT CAP

## A HARD-WORKING HYDRATOR

Flip, bite, and sip your way through a day of fully hydrated adventure. Spill-proof when open and leak-proof when closed – a durable and worthy daily companion.

### FEATURES

- FLIP, BITE, SIP**  
DRINK THROUGH STRAW
- LEAK-PROOF**  
LEAK-PROOF WHEN CLOSED, SPILL-PROOF WHEN OPEN
- VACUUM INSULATED**  
18/8 STAINLESS STEEL
- DURABLE**  
POWDER COAT FINISH
- STAYS DRY**  
SWEAT-PROOF INSULATION
- EASY TO CARRY**  
COMFORTABLE CARRY HANDLE
- EASY TO CLEAN**  
CAP AND VESSEL DISHWASHER SAFE
- DRINK CLEAN**  
BPA, BPS & BPF FREE
- UNIVERSAL CAP SYSTEM**  
COMPATIBLE WITH MOST ACCESSORY CAPS

### SUSTAINABILITY



REPURPOSE™  
SILVER

VACUUM INSULATED STAINLESS STEEL  
**CHUTE® MAG**



**MAGNETIC**  
QUICK STOW CAP



**A MAGNETIC PERSONALITY**

An easy twist and stow magnetic top sits securely out of the way, and keeping drinks thermally regulated for hours on end.

**FEATURES**

1. **MAGNETIC CAP**  
STOWS OUT OF THE WAY WHEN DRINKING
2. **EASY TO CARRY**  
COMFORTABLE CARRY HANDLE
3. **LEAK-PROOF**  
LEAK-PROOF WHEN CLOSED
4. **VACUUM INSULATED**  
18/8 STAINLESS STEEL
5. **DURABLE**  
POWDER COAT FINISH
6. **STAYS DRY**  
SWEAT-PROOF INSULATION
7. **EASY TO CLEAN**  
CAP AND VESSEL DISHWASHER SAFE
8. **DRINK CLEAN**  
BPA, BPS & BPF FREE
9. **UNIVERSAL CAP SYSTEM**  
COMPATIBLE WITH MOST ACCESSORY CAPS

**SUSTAINABILITY**



**REPURPOSE™**  
SILVER

<b>COLLECTION</b>	EVERYDAY BOTTLE
<b>MATERIAL</b>	VACUUM INSULATED STAINLESS STEEL
<b>COMPATIBLE CAPS</b>	EDDY®+ : HOT CAP : CARRY CAP : PAK™ CAP

**40 OZ : 1.2L**



1517005012 BLACK    1517403012 NAVY    1517303012 MOSS

16 HRS    36 HRS

**32 OZ : 1L**



1516004001 BLACK    1516402001 NAVY    1516403001 LARKSPUR    1516303001 MOSS    1516604001 TERRACOTTA ROSE (NEW COLOR)    1516802001 KOI    1516103001 WHITE

12 HRS    32 HRS

**20 OZ : .6L**



1515004060 BLACK    1515402060 NAVY    1515403060 LARKSPUR    1515303060 MOSS    1515604060 TERRACOTTA ROSE (NEW COLOR)    1515802060 KOI    1515103060 WHITE

10 HRS    24 HRS



VACUUM INSULATED STAINLESS STEEL  
**CARRY CAP**



TOP VIEW



<b>COLLECTION</b>	EVERYDAY BOTTLE
<b>MATERIAL</b>	VACUUM INSULATED STAINLESS STEEL
<b>COMPATIBLE CAPS</b>	EDDY®+ : CHUTE® MAG : HOT CAP : PAK™ CAP

**THE CHILLED MINIMALIST**

An effortless and easy carry solution for daily hydration. Carry Cap VSS maintains drink temps for hours and stands up to endless adventure.

**FEATURES**

- VACUUM INSULATED**  
18/8 STAINLESS STEEL
- DURABLE**  
POWDER COAT FINISH
- STAYS DRY**  
SWEAT-PROOF INSULATION
- EASY TO CARRY**  
COMFORTABLE CARRY HANDLE
- EASY TO CLEAN**  
CAP AND VESSEL DISHWASHER SAFE
- DRINK CLEAN**  
BPA, BPS & BPF FREE
- UNIVERSAL CAP SYSTEM**  
COMPATIBLE WITH MOST ACCESSORY CAPS

**SUSTAINABILITY**



**REPURPOSE™**  
SILVER

**64 OZ : 2L**



2369001019 BLACK    2369401019 LARKSPUR    2369301019 MOSS

30  
HRS

45  
HRS

**32 OZ : 1L**



2368001001 BLACK    2368401001 LARKSPUR    2368601001 TERRACOTTA ROSE    2368301001 MOSS    2368101001 WHITE

12  
HRS

32  
HRS

**20 OZ : .6L**



2367001060 BLACK    2367401060 LARKSPUR    2367601060 TERRACOTTA ROSE    2367301060 MOSS    2367101060 WHITE

10  
HRS

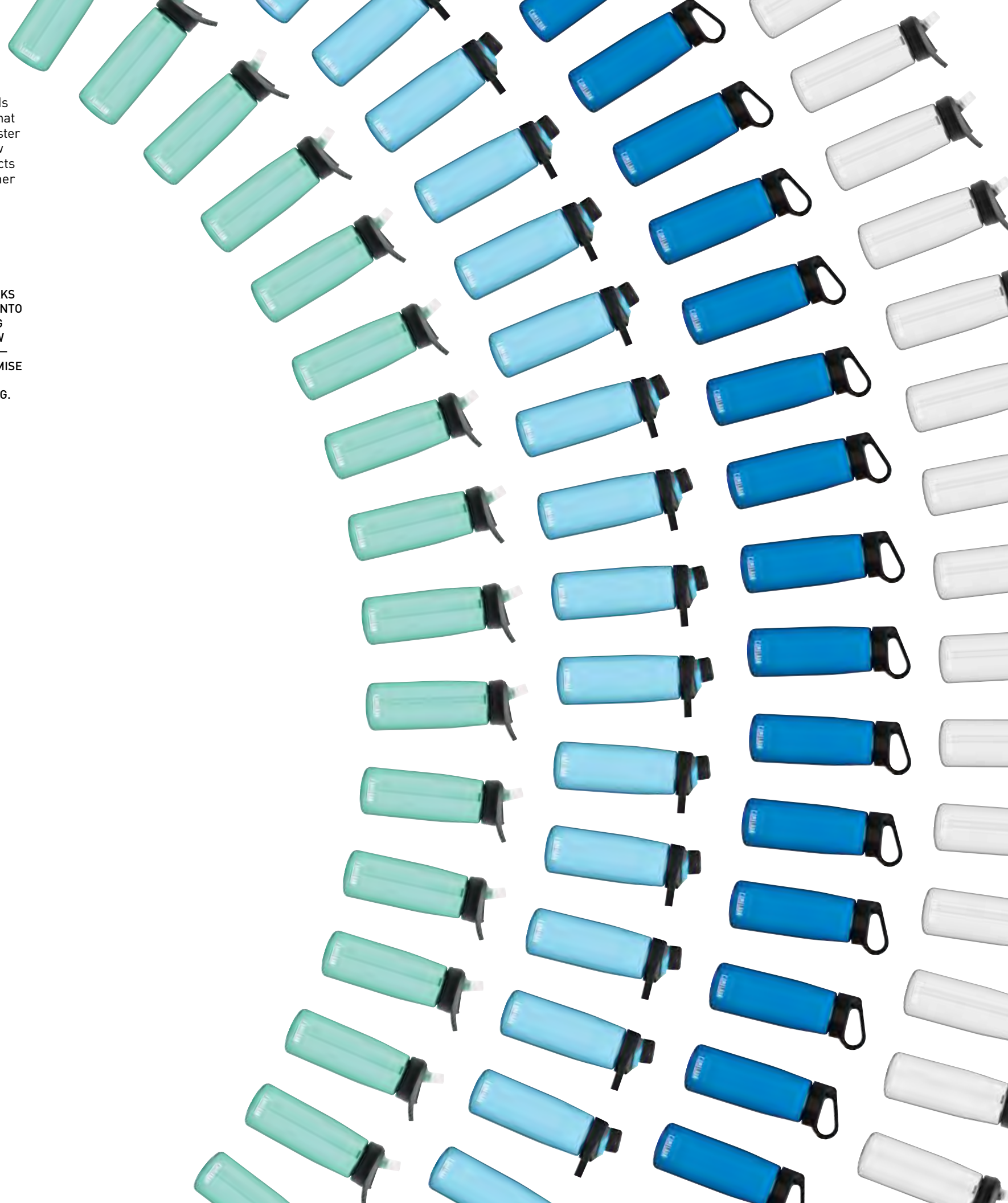
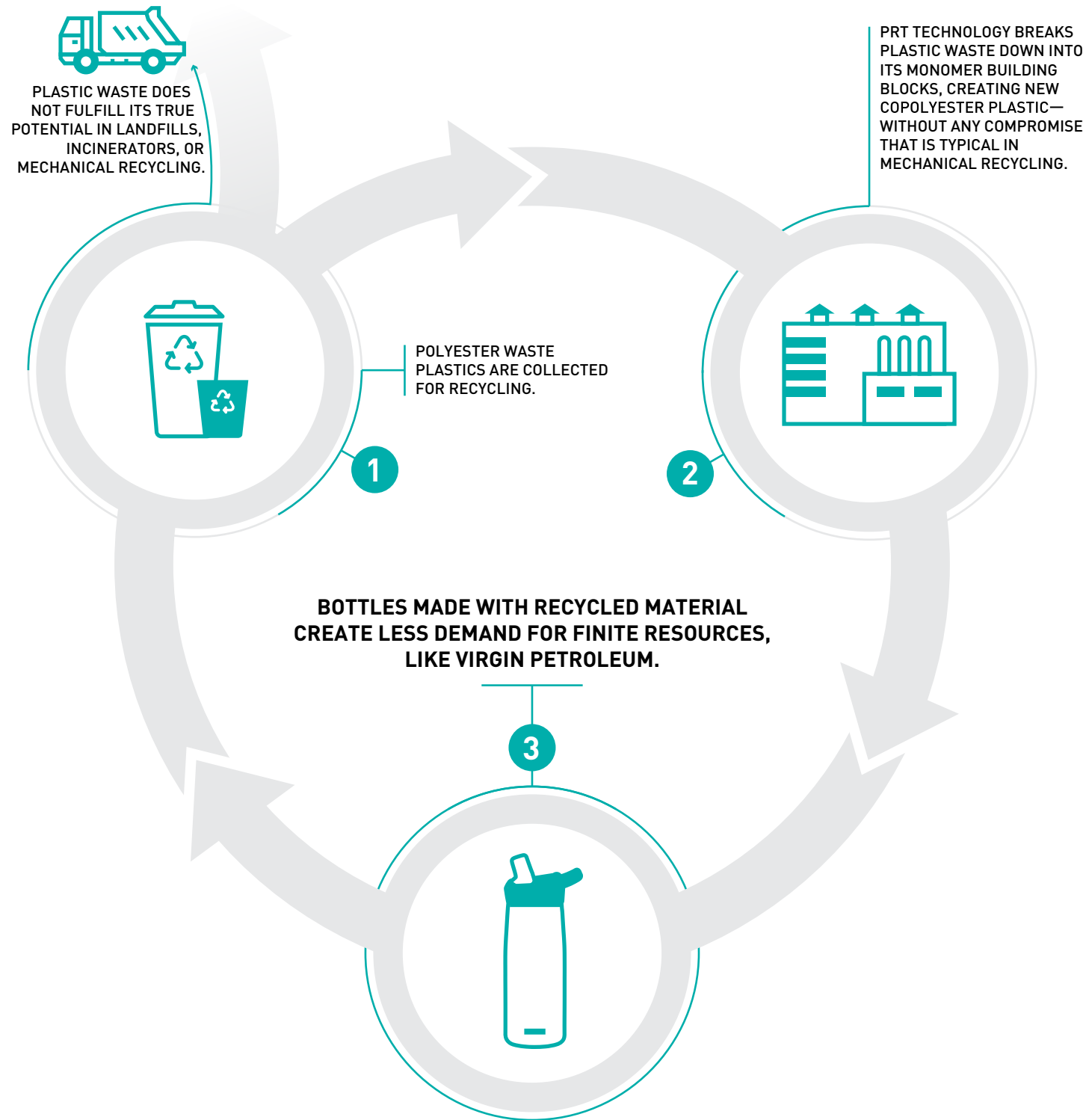
24  
HRS

# tritan<sup>®</sup> RENEW

50% RECYCLED MATERIAL

## A BETTER LIFE FOR OLD PLASTICS

Breathing new life into plastic waste is harder than it seems. Much of what's recycled ends up in landfills and incinerators or is mechanically chipped and recycled into new products that don't always have the durability needed for daily use. There is science in the solution. Polyester Renewal Technology (PRT) is more efficient than mechanical recycling and produces new material that is made with 50% recycled content. Less virgin plastic needed for new products means saving precious environmental resources. Tritan Renew is highly durable, dishwasher safe, and free of BPA, BPS, and BPF chemicals. Our reusable bottles made better.



# EDDY<sup>®</sup>+

UPDATED



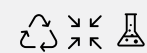
## IT JUST KEEPS GETTING BETTER

The classic everyday bottle made even better with 50% recycled material and a color-matched thumb tab. Lightweight, durable, and dependable hydration.

### FEATURES

- 1. FLIP, BITE, SIP**  
DRINK THROUGH STRAW
- 2. LEAK-PROOF**  
LEAK-PROOF WHEN CLOSED, SPILL-PROOF WHEN OPEN
- 3. LIGHTWEIGHT AND DURABLE**
- 4. COLOR MATCH THUMB TAB**
- 5. EASY TO CARRY**  
COMFORTABLE CARRY HANDLE
- 6. ODOR AND STAIN RESISTANT**
- 7. EASY TO CLEAN**  
CAP AND VESSEL DISHWASHER SAFE
- 8. DRINK CLEAN**  
BPA, BPS & BPF FREE
- 9. UNIVERSAL CAP SYSTEM**  
COMPATIBLE WITH MOST ACCESSORY CAPS

### SUSTAINABILITY



<b>COLLECTION</b>	EVERYDAY BOTTLE
<b>MATERIAL</b>	TRITAN™ RENEW COPOLYESTER : 50% RECYCLED MATERIAL
<b>COMPATIBLE CAPS</b>	CHUTE® MAG : CARRY CAP : PAK™ CAP

## 32 OZ : 1L



2464001001 CHARCOAL 2464401001 OXFORD 2464402001 TRUE BLUE 2464301001 COASTAL 2464601001 ROSE 2464101001 CLEAR

## 25 OZ : .75L



2465001075 CHARCOAL 2465401075 OXFORD 2465402075 TRUE BLUE 2465302075 COASTAL 2465301075 OLIVE 2465501075 LUPINE 2465602075 ROSE 2465601075 CARDINAL 2465801075 LAVA 2465701075 SULPHUR 2465101075 CLEAR

## 20 OZ : .6L



2466001060 CHARCOAL 2466401060 OXFORD 2466402060 TRUE BLUE 2466301060 COASTAL 2466501060 LUPINE 2466602060 ROSE 2466601060 CARDINAL 2466101060 CLEAR

## INSULATED 20 OZ : .6L



2467401060 OCEAN 2467501060 AMETHYST

## 14 OZ : .4L UPDATED



2472403041 TRUE BLUE 2472602041 GRAPEFRUIT 2472104041 CLEAR



# CHUTE® MAG

UPDATED

**tritan™**  
RENEW  
50% RECYCLED MATERIAL



**MAGNETIC**  
QUICK STOW CAP



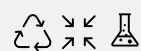
## GO WITH THE FLOW

This lightweight and durable high-flow bottle just got a sustainable makeover. Now made with 50% recycled material and a color-matched tether that safely stows the magnetic cap while drinking.

### FEATURES

- MAGNETIC CAP**  
STOWS OUT OF THE WAY WHEN DRINKING
- COLOR MATCH TETHER**
- EASY TO CARRY**  
COMFORTABLE CARRY HANDLE
- LEAK-PROOF**  
LEAK-PROOF WHEN CLOSED
- LIGHTWEIGHT AND DURABLE**
- ODOR AND STAIN RESISTANT**
- EASY TO CLEAN**  
CAP AND VESSEL DISHWASHER SAFE
- DRINK CLEAN**  
BPA, BPS & BPF FREE
- UNIVERSAL CAP SYSTEM**  
COMPATIBLE WITH MOST ACCESSORY CAPS

### SUSTAINABILITY



**REPURPOSE™**  
GOLD

<b>COLLECTION</b>	EVERYDAY BOTTLE
<b>MATERIAL</b>	TRITAN™ RENEW COPOLYESTER : 50% RECYCLED MATERIAL
<b>COMPATIBLE CAPS</b>	EDDY®+ : CARRY CAP : PAK™ CAP

## 32 OZ : 1L



2469001001 CHARCOAL 2469401001 OXFORD 2469301001 OLIVE 2469601001 CARDINAL 2469801001 LAVA 2469701001 SULPHUR (NEW COLOR) 2469101001 CLEAR

## 25 OZ : .75L



2470001075 CHARCOAL 2470401075 OXFORD 2470402075 TRUE BLUE 2470302075 COASTAL (NEW COLOR) 2470301075 OLIVE (NEW COLOR) 2470501075 LUPINE 2470601075 CARDINAL 2470801075 LAVA 2470701075 SULPHUR (NEW COLOR) 2470101075 CLEAR

## 20 OZ : .6L



2471001060 CHARCOAL 2471401060 TRUE BLUE 2471501060 LUPINE 2471801060 LAVA 2471701060 SULPHUR (NEW COLOR) 2471101060 CLEAR

# CARRY CAP

NEW



TOP VIEW



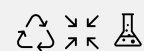
## SIMPLY SUSTAINABLE

Made with Tritan™ Renew and 50% recycled material, Carry Cap's grab-and-go, twist-to-open interface makes everyday hydration effortless.

### FEATURES

1. **LIGHTWEIGHT AND DURABLE**
2. **EASY TO CARRY**  
COMFORTABLE CARRY HANDLE
3. **EASY TO CLEAN**  
CAP AND VESSEL DISHWASHER SAFE
4. **ODOR & STAIN RESISTANT**
5. **DRINK CLEAN**  
BPA, BPS & BPF FREE
6. **UNIVERSAL CAP SYSTEM**  
COMPATIBLE WITH MOST ACCESSORY CAPS

### SUSTAINABILITY



REPURPOSE™  
GOLD

<b>COLLECTION</b>	EVERYDAY BOTTLE
<b>MATERIAL</b>	TRITAN™ RENEW COPOLYESTER : 50% RECYCLED MATERIAL
<b>COMPATIBLE CAPS</b>	EDDY®+ : CHUTE® MAG : PAK™ CAP

## CARRY CAP 32 OZ : 1L



2444001001 CHARCOAL    2444401001 OXFORD    2444302001 COASTAL    2444301001 OLIVE    2444601001 ROSE    2444101001 CLEAR

## CARRY CAP 25 OZ : .75L



2443001075 CHARCOAL    2443401075 OXFORD    2443302075 COASTAL    2443301075 OLIVE    2443601075 ROSE    2443101075 CLEAR





# PODIUM®



PODIUM® CAP



<b>COLLECTION</b>	PODIUM®
<b>MATERIAL</b>	TRUTASTE™ POLYPROPYLENE
<b>COMPATIBLE CAPS</b>	PODIUM® CAP : TRI-MODE CAP

## PODIUM® COLLECTION

Whether you're in the backwoods finding new singletrack or out chasing the perfect canyon road, there's a solution for every rider. Our premium collection of Podium® bottles has you covered.

### FEATURES

- 1. TRUTASTE™ WITH HYDROGUARD™**  
TASTE YOUR BEVERAGE AND NOTHING ELSE
- 2. OPTIMIZED CAGE FIT**  
ENGINEERED TO FIT IN A VARIETY OF BOTTLE CAGES
- 3. EASY SQUEEZE**  
GET MORE FLUID WITH LESS EFFORT
- 4. POSITIVE LOCK OUT**  
FOR LEAK-PROOF TRANSPORT
- 5. HIGH-FLOW AND SELF-SEALING**  
CAP MAXIMIZES FLOW RATE WHILE ELIMINATING SPLATTERS AND SPILLS
- 6. BPA, BPS & BPF FREE**  
RIDE CLEAN, DRINK CLEAN
- 7. CAP DISASSEMBLES FOR EASY CLEANING**  
PARTS SEPARATE FOR THOROUGH CLEANING

## PODIUM® CHILL™ 24 OZ : .71L



1873102071 CUSTOM WHITE : BLACK  
1873002071 CUSTOM BLACK : BLACK  
1873405071 CUSTOM OXFORD : OXFORD  
1873604071 CUSTOM RED : RED

## PODIUM® CHILL™ 21 OZ : .62L



1874102062 CUSTOM WHITE : BLACK  
1874002062 CUSTOM BLACK : BLACK  
1874403062 CUSTOM OXFORD : OXFORD  
1874604062 CUSTOM RED : RED

## PODIUM® 24 OZ : .71L



1875003071 CUSTOM SMOKE : BLACK  
1875004071 CUSTOM BLACK : BLACK  
1875102071 CUSTOM WHITE : WHITE  
1875403071 CUSTOM OXFORD : OXFORD  
1875602071 CUSTOM RED : RED  
1875101071 CUSTOM CLEAR : BLACK

## PODIUM® 21 OZ : .62L



1876003062 CUSTOM SMOKE : BLACK  
1876004062 CUSTOM BLACK : BLACK  
1876102062 CUSTOM WHITE : WHITE  
1876402062 CUSTOM OXFORD : OXFORD  
1876602062 CUSTOM RED : RED  
1876101062 CUSTOM CLEAR : BLACK



# REIGN® CHILL REIGN®



TRI-MODE CAP



**COOLING SHOWER MODE**  
AVOID OVERHEATING  
DURING PLAY

<b>COLLECTION</b>	REIGN®
<b>MATERIAL</b>	TRUTASTE™ POLYPROPYLENE
<b>COMPATIBLE CAPS</b>	PODIUM® CAP : TRI-MODE CAP

## HYDRATION AND COOLING

The team sport bottle for the field. Tri-mode sport cap features our Jet Valve™ to deliver a targeted high flow stream, a cooling 8-point shower mode to avoid overheating, and a leak-proof lock-out mode for clean transport.

### FEATURES

- REIGN® CHILL KEEPS WATER COLDER LONGER**  
INSULATION KEEPS WATER COLD TWICE AS LONG
- REIGN® GAUGE**  
QUICK VIEW LIQUID LEVEL INDICATOR
- EASY SQUEEZE**  
JET VALVE™ DELIVERS A HIGH-FLOW STREAM - NO MOUTH CONTACT
- LEAK-PROOF TRANSPORT**  
LOCK-OUT MODE PREVENTS LEAKAGE
- TRUTASTE™ WITH HYDROGUARD™**  
TASTE YOUR BEVERAGE AND NOTHING ELSE
- BPA, BPS & BPF FREE**  
PLAY CLEAN, DRINK CLEAN
- CAP DISASSEMBLES FOR EASY CLEANING**  
PARTS SEPARATE FOR THOROUGH CLEANING
- GRIP PAD**  
INCREASES GRIP FOR CONDENSATION OR SWEATY HANDS

### SUSTAINABILITY



REPURPOSE™  
SILVER

## REIGN® CHILL™ 32 OZ : 1L



1992001101  
CUSTOM SILVER

## REIGN® 32 OZ : 1L



1991001001  
BLACK



1991301001  
FOREST GREEN



1991401001  
NAVY BLUE



1991402001  
ROYAL BLUE



1991601001  
UNIVERSITY RED



1991801001  
TEAM ORANGE

# ORDERING INFO

**DECORATION:** Laser etch available on stainless steel products. One customizable side only. Full-color digital print available on plastic bottle products. Full wrap, front and/or back art placement. Reach out to [custom@camelbak.com](mailto:custom@camelbak.com) to request an artwork template and print dimensions.

**ORDER MINIMUMS:**

**Plastic:** Low minimums of 36 units per style. Mixing bottle colors is allowed as long as the bottles are multiples of 6 each per color and style/size. All units must feature same logo artwork.

**Stainless:** Low minimums of 24 units per style. Mixing bottle colors is allowed as long as the bottles are multiples of 4 each per color and style/size. All units must feature same logo artwork.

Need lower MOQs? Want multiple logos for your order? Complete your order through our online B2B Customizer tool. Contact [custom@camelbak.com](mailto:custom@camelbak.com) to request an account.

**PROOF APPROVAL:** Artwork proof provided 2-3 business days after a complete order is submitted. Customer is responsible for artwork review and approval before production scheduling can begin.

**STANDARD LEAD TIME:** Allow up to 4 weeks per order. Shipments typically occur 3 weeks from customer artwork approval. Expedited freight is available for extra charge. Make sure to communicate event date and "in hands date" when placing order.

**PAYMENT:** Current CamelBak customers in good credit standing will receive Net 30 Day terms. All other accounts will be required to prepay with a Credit Card: Visa, Mastercard, Discover, American Express.

**ARTWORK:** Vector art is needed for all custom print files. EPS, PDF, or AI files. All text needs to be converted to outlines/curves to avoid font issues. Art that does not meet requirements may add lead time and/or redraw fees in extreme circumstances.



QUESTIONS? Email CamelBak Custom at [custom@camelbak.com](mailto:custom@camelbak.com).

\*PRODUCTS AND SPECIFICATIONS  
SUBJECT TO CHANGE



**CAMELBAK.COM**

CAMELBAK PRODUCTS LLC, 2000 S. MCDOWELL  
BLVD, STE. 200, PETALUMA, CA 94954

CAMELBAK EU, RIVER HOUSE, ST. MARY'S RD,  
NEWCASTLE WEST, IRELAND V42AN22

© 2020 CAMELBAK PRODUCTS LLC

WARRANTY: [CAMELBAK.COM/GOTYOURBAK](https://www.camelbak.com/gotyourbak)